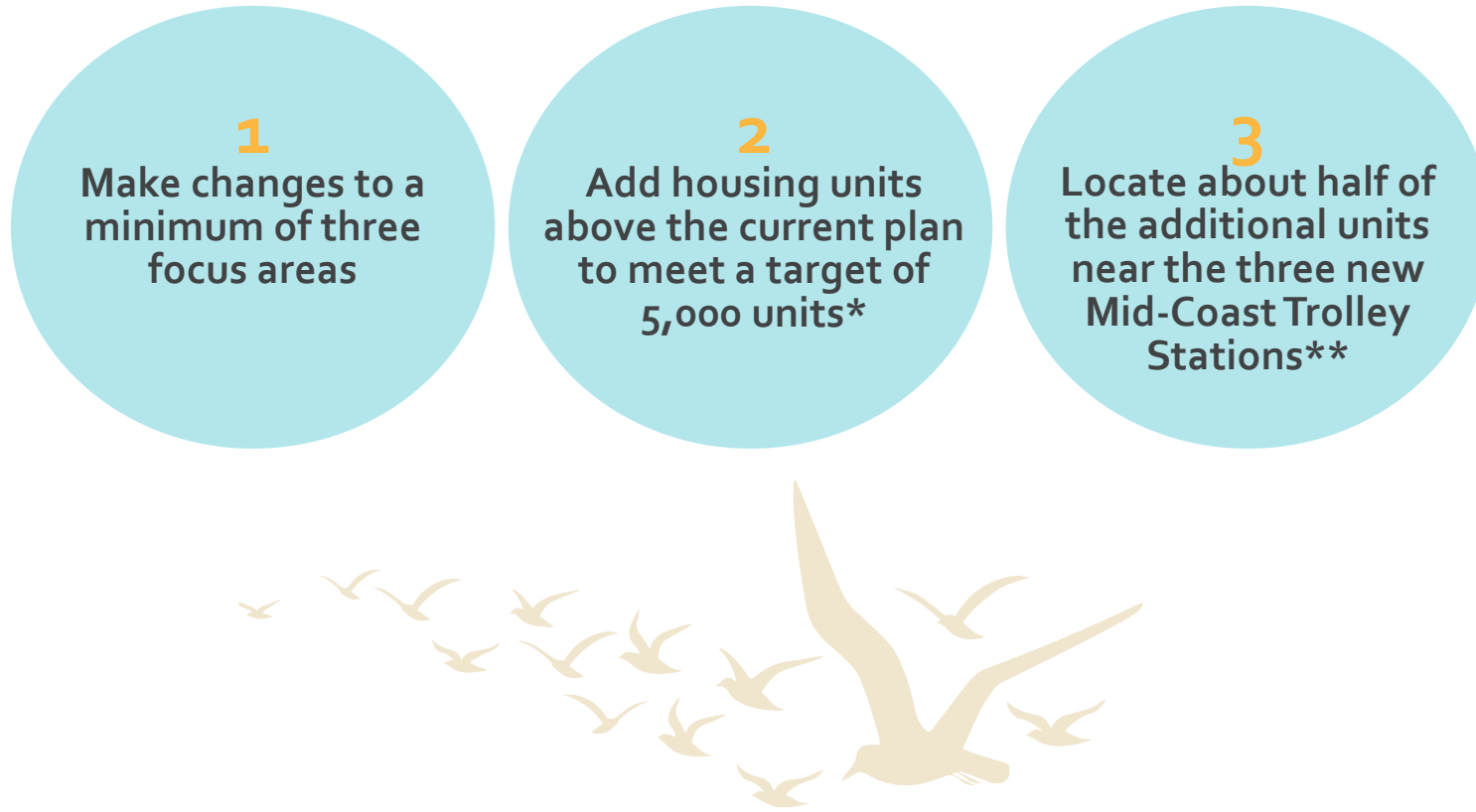


Objectives - What do you need to do?

As you make selections in each of the focus areas, please try to meet the following objectives:



Focus Area	Subarea	Additional Units (Above Current Plan)		
		Option 1	Option 2	Option 3
1	1A	335	566	1,003
	1B	542	1,141	N/A
	1C	39	55	N/A
	1D	14	24	43
	<i>Subtotal</i>			
2	2A	65	92	143
	2B	102	231	317
	2C	123	187	231
	<i>Subtotal</i>			
3	3A	12	34	N/A
	3B	112	189	333
	3C	18	54	N/A
	<i>Subtotal</i>			
4	4A	930	1,257	1,877
	4B	177	239	357
	<i>Subtotal</i>			
5	5A	17	54	127
	5B	5	8	N/A
	5C	75	106	N/A
	5D	26	47	N/A
	5E	78	130	N/A
	<i>Subtotal</i>			
6	6A	810	1,235	1,516
	6B	199	307	377
	6C	183	283	347
	6D	343	520	645
	<i>Subtotal</i>			
7	7A	80	133	234
	7B	94	144	N/A
	7C	126	159	N/A
	7D	84	18	49
	7E	13	22	55
	<i>Subtotal</i>			
8	8A	21	36	68
	8B	50	75	
	8C	67	131	251
	8D	186	229	310
	8E	48	82	122
	<i>Subtotal</i>			
9	9A	115	192	338
	9B	22	37	66
	<i>Subtotal</i>			
<i>Total of Additional Units</i>				

* To establish a numeric objective for this exercise, the Planning Department estimated a need of 5,000 additional housing units above the current community plan over the next 30 years. This is based on existing community plan housing capacity, San Diego Housing Commission housing production objectives, utilizing development assumptions and feasibility testing of potential sites, and SANDAG 2050 housing forecast data.

** To leverage investment in the Mid-Coast Trolley extension, the exercise has an additional objective of placing 40 percent of the future housing total near the three new trolley stations. This allocation will assist in creating opportunities for future residents to live close to transit and have access to employment centers, universities, and destinations with the region.